

# WINSTED TOWNSHIP

Each township has six files containing six sections in each, and one file containing all 36 sections.

Winsted01to06.pdf  
Winsted07to12.pdf  
Winsted13to18.pdf  
Winsted19to24.pdf  
Winsted25to30.pdf  
Winsted31to36.pdf  
WinstedAll36.pdf

The points are listed starting with the point above the SE corner and continuing in a counter-clockwise rotation around the section. This normally begins with the East point, Northeast, then North, but may also include Witness Corners, and/or Meander Corners.

## **Definitions**

**Witness Corner:** A witness corner “stands in” when the true corner cannot be monumented or occupied because of difficult terrain or obstruction of the corner sight. The witness corner must be on the section line and is usually 5 or 10 chains away from the true corner.

**Meander Corner:** The intersection of a township, range, or section line and the banks of a navigable stream or meandering body of water.

EAST QUARTER corner, Section 7, Township 117 North, Range 27 West

# Certificate of Location of Government Corner

## SKETCH OF REFERENCE TIES (NO SCALE)



SECTION 7

Nail and disc  
West face of power pole  
127.43

fence  
cast iron monument

Nail and bottle cap  
East face of power pole  
205.58

center line of gravel road

Nail and bottle cap  
North face of 36 inch  
elm, up 1 foot  
60.15

fence

SECTION 8

Statement of evidence relative to this corner location on sheet 2

I hereby certify that this document was prepared by me or under my direct supervision.

Willard Pellinen

Willard Pellinen  
McLeod County Surveyor  
License No. 9626

Date October 23, 1992

OFFICE OF THE COUNTY RECORDER  
MCLEOD COUNTY, MINNESOTA.

I hereby certify that this document was filed in this office at 3 o'clock P.M. on the 17th day of November, 1992.

Carmen Ottilie Mulder County Recorder

By \_\_\_\_\_, Deputy

Document No. 248900

EAST QUARTER corner, Section 7, Township 117 North, Range 27 West**Certificate of Location of Government Corner**

1856. E.N. Darling of the General Land Office established this corner. He set a post in a marsh and marked 9 inch and an 8 inch elm for bearing trees.

January 26, 1972. C. Sterner, 35, had lived in the Northwest Quarter of Section 8 all his life said there was stone at the corner, west of the gravel road. A. Rathmanner, 70 years old, had lived in the Southwest Quarter of Section 8 all his life, also said there is a stone at the corner, west of the road, in the ditch. Mr. H. Hackenkamp, 69 years old also said there is a stone in the ditch which is the quarter corner.

May 9, 1972. McCombs Knutson Associates (Dickman Knutson, county surveyor) dug for the corner and found a stone. Mr. Ed Sterner, 77 years old, said the stone Knutson found is the corner. He said stone was set by him and 2 other adjoining land owners about 50 years ag, around 1920. They found a wood post and replaced it with the stone.

October 30, 1972. Knutson set a McLeod County cast iron monument at the corner.

This corner is 5.48 feet north of a split between the section corners and 5.90 feet west of a straight line.

April 16, 1992. We found the monument in good condition and took new reference ties.

The monument set by Knutson is accepted as marking the quarter corner. It fits the position as per testimony by the adjoining land owners and it perpetuates the position of the older monuments, the stone and wood post.

NORTHEAST corner, Section 7, Township 117 North, Range 27 West

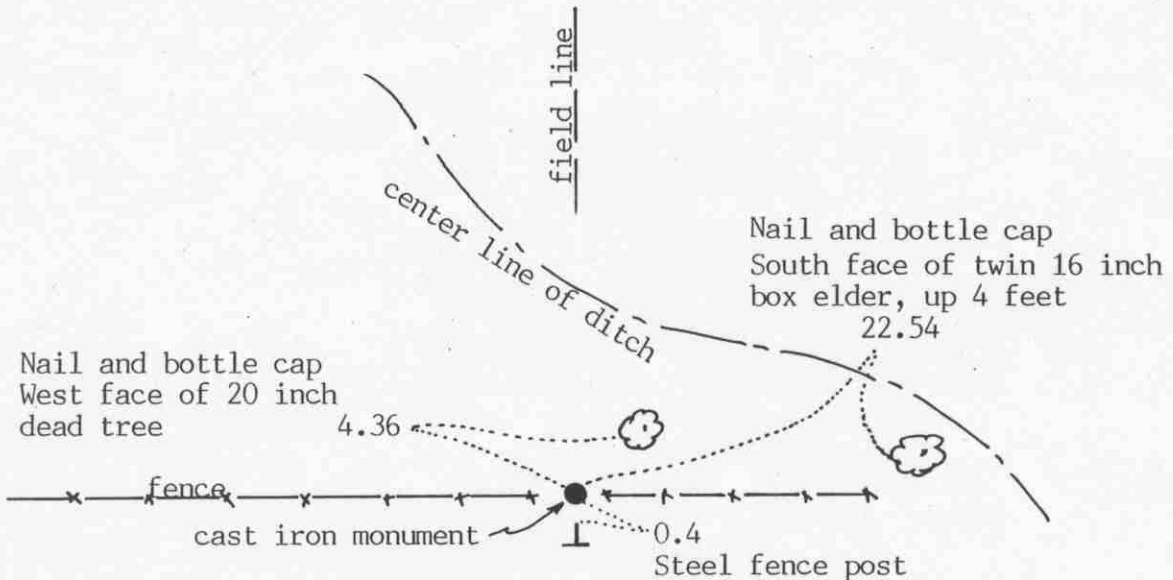
# Certificate of Location of Government Corner

## SKETCH OF REFERENCE TIES

(NO SCALE)

SECTION 6

SECTION 5



SECTION 7

SECTION 8

Statement of evidence relative to this corner location on sheet 2

I hereby certify that this document was prepared by me or under my direct supervision.

Willard Pellinen

Willard Pellinen  
McLeod County Surveyor  
License No. 9626

Date Nov. 15, 1992

OFFICE OF THE COUNTY RECORDER  
MCLEOD COUNTY, MINNESOTA.

I hereby certify that this document was filed in this office at 9 o'clock A.M. on the 20th day of November, 19 92.

Carmen (Belle) Gilder, County Recorder

By \_\_\_\_\_, Deputy

Document No. 248987

NORTHEAST corner, Section 7, Township 117 North, Range 27 West

## Certificate of Location of Government Corner

1856. E.N.Darling of the General Land Office established this corner. He set a post in a dry marsh and marked 3 aspens and an elm for bearing trees.

May 9, 1972. Mr. Ed Sterner, 77 years old, owned land south of this corner, said the fence intersection, fences east, west and north, is the corner. Mr. W. Quast, 52 years old, had lived in the Section 6 since 1952, agrees with Mr. Sterner.

November 1, 1972. McCombs Knutson Associates (Dickman Knutson, county surveyor) searched the area but found no evidence of the corner except the old corner fence post. Knutson set a McLeod County cast iron monument at the location of the old post and took reference ties.

The monument set by Knutson is accepted as marking the location of the section corner. This location had been perpetuated by the fence intersection.

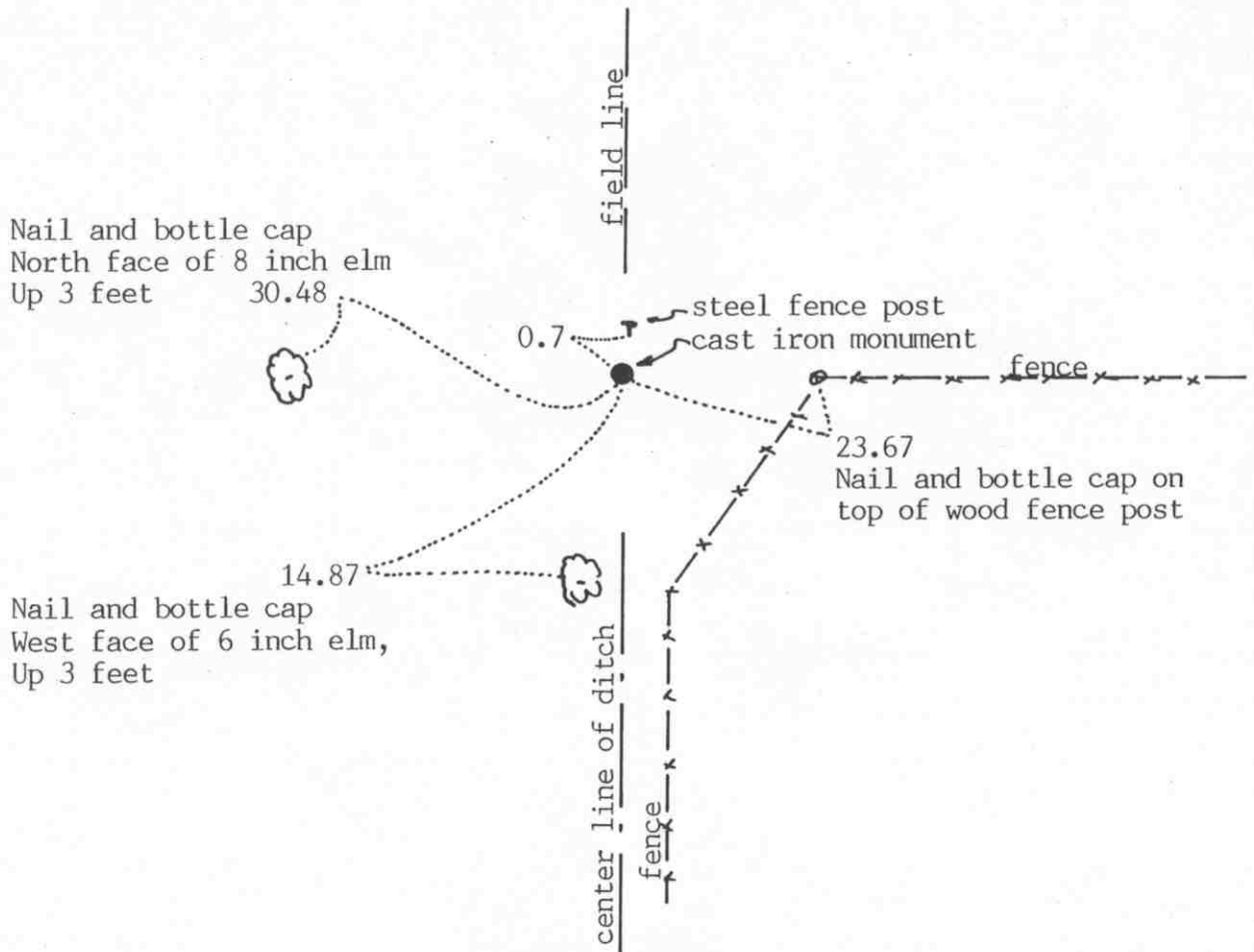
November 13, 1992. We found the monument in good condition but all the reference ties had been destroyed. The fence running north had been removed and there is now a field line. We took new available reference ties.

North Quarter corner, Section 7, Township 117 North, Range 27 West

# Certificate of Location of Government Corner

SKETCH OF REFERENCE TIES  
(NO SCALE)

SECTION 6



SECTION 7

Statement of evidence relative to this corner location on sheet 2

I hereby certify that this document was prepared by me or under my direct supervision.

Willard Pellinen

Willard Pellinen  
McLeod County Surveyor  
License No. 9626

Date NOV. 15, 1992

OFFICE OF THE COUNTY RECORDER  
MCLEOD COUNTY, MINNESOTA.

I hereby certify that this document was filed in this office at 9 o'clock A.M. on the 20th day of November, 19 92.

Carmen H. L. J. J. J. County Recorder

By \_\_\_\_\_, Deputy

Document No. 248988

NORTH QUARTER corner, Section 7, Township 117 North, Range 27 West

## **Certificate of Location of Government Corner**

1856. This corner was originally established by E.N. Darling. He set a post and marked 2 aspens for bearing trees.

January 31, 1972. McCombs Knutson Associates (Dickman Knutson, county surveyor) measured the north line of Section 7 and set a temporary north quarter corner at the fence intersection, fences south and east. Mr. F. Stifter, 64 years old and had lived in the Northeast Quarter of Section 7 all his life said the fence intersection is the corner.

November 1, 1972. Knutson searched the area and found the remains of the old wood fence corner post. Knutson set a McLeod County cast iron monument and took reference ties.

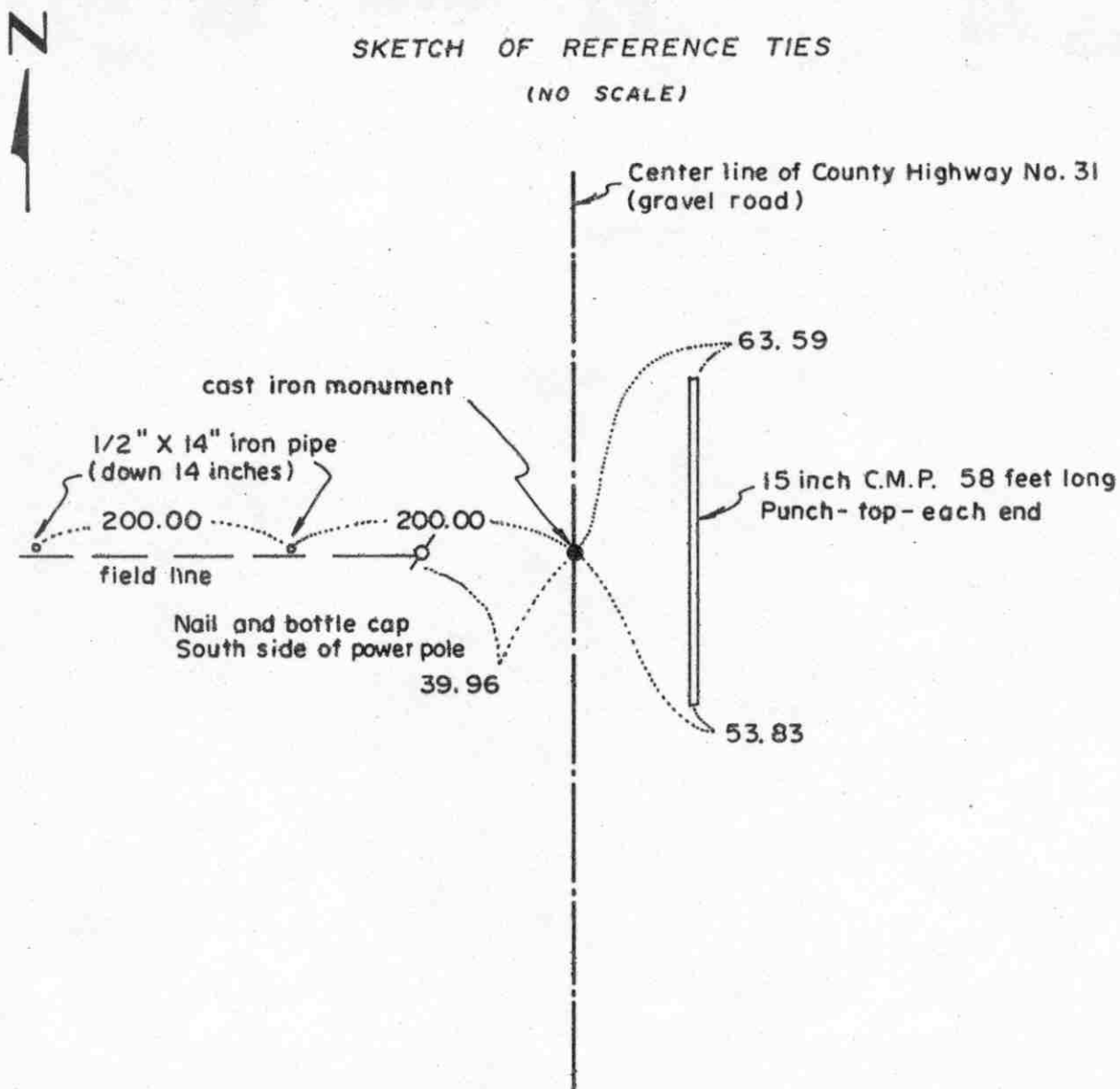
The monument set by Knutson is accepted as marking the correct location of the quarter corner. It replaces the old corner fence post which had perpetuated the location of the corner.

November 13, 1992. We found the monument in good condition. All old ties had been destroyed so we took new available reference ties. The fence running south has been moved east and now there is a ditch on line to the south.

NORTHEAST corner, Section 12, Township 117 North, Range 28 West

# Certificate of Location of Government Corner

SKETCH OF REFERENCE TIES  
(NO SCALE)



Statement of evidence relative to this corner location on sheet 2

I hereby certify that this document was prepared by me or under my direct supervision.

Willard Pellinen

Willard Pellinen  
McLeod County Surveyor  
License No. 9626

Date 2/8/89

OFFICE OF THE COUNTY RECORDER  
MCLEOD COUNTY, MINNESOTA.

I hereby certify that this document was filed in this office at 9 o'clock A.M. on the 15th day of Feb., 1989.

Carmin Ostlie, County Recorder

By \_\_\_\_\_, Deputy

Document No. 226951



NORTHEAST corner, Section 12, Township 117 North, Range 28 West

## *Certificate of Location of Government Corner*

This corner was established in September, 1855, by John Ryan of the Government Land Office. He set a post and took reference ties to 4 bearing trees.

In 1899, E.L.Higgins reset the corner using the ties to the bearing trees.

In December, 1968, we measured the east line of Section 12 and Section 1 and set a temporary corner.

In October, 1970, we dug for the corner and found a rotted wood stake below the road surface at the original ground. We took available ties and in May, 1972, we set a McLeod County cast iron monument.

On June 1, 1988, we retied the corner, road to be graded.

On July 28, 1988, we reset the corner, a  $\frac{1}{2}$  inch diam. iron pipe, and on August 5, 1988, we replaced the pipe with a McLeod County cast iron monument. Top of monument down 4 inches below the road surface with a  $\frac{1}{2}$  inch by 14 inch iron pipe below the monument.

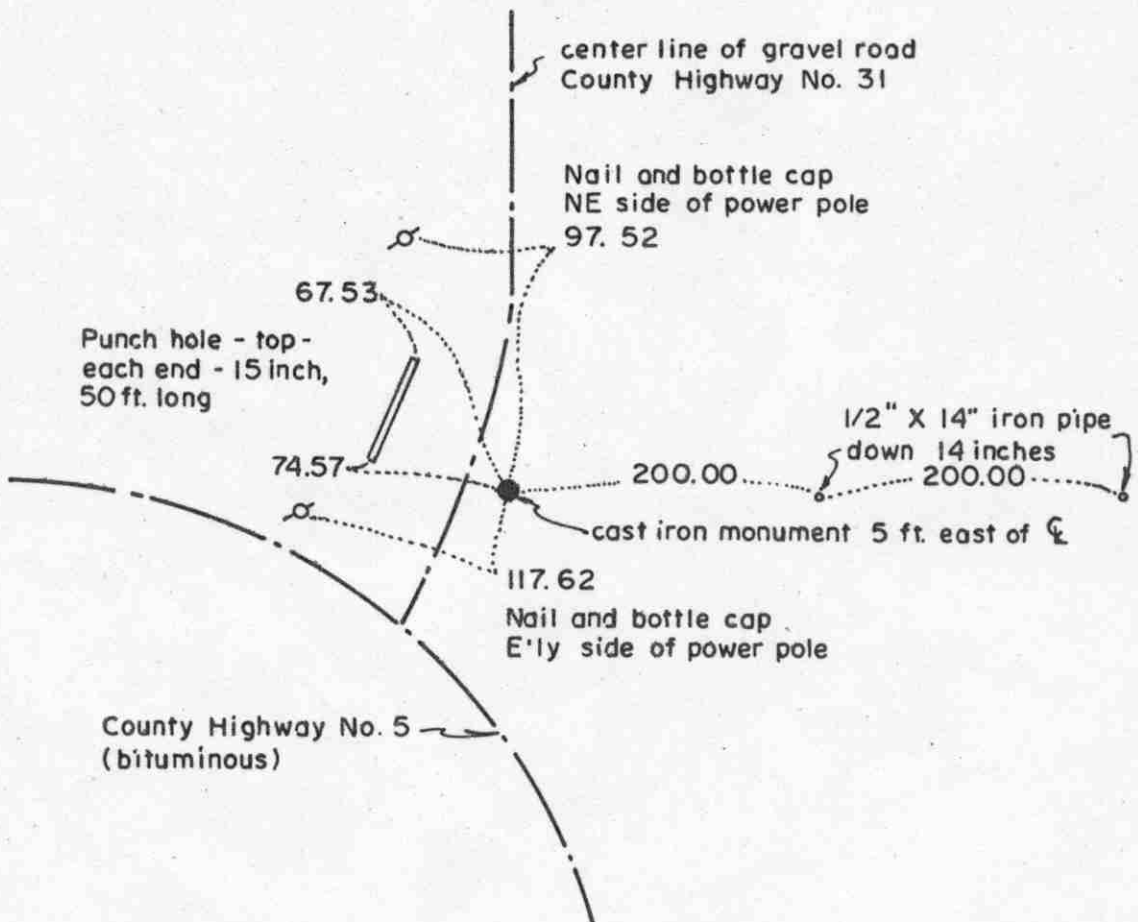
The location of this corner has been perpetuated by the stake set by Higgins in 1899 and later by the iron pipe and the cast iron monument.

EAST QUARTER corner, Section 12, Township 117 North, Range 28 West

## Certificate of Location of Government Corner

### SKETCH OF REFERENCE TIES

(NO SCALE)



center line of gravel road  
County Highway No. 31

Nail and bottle cap  
NE side of power pole  
97. 52

67.53

Punch hole - top -  
each end - 15 inch,  
50 ft. long

74.57

200.00

1/2" X 14" iron pipe  
down 14 inches

200.00

-cast iron monument 5 ft. east of C

117.62

Nail and bottle cap  
E'ly side of power pole

County Highway No. 5  
(bituminous)

Statement of evidence relative to this corner location on sheet 2

I hereby certify that this document  
was prepared by me or under my  
direct supervision.

Willard Pellinen  
Willard Pellinen  
McLeod County Surveyor  
License No. 9626

Date 2/9/89

OFFICE OF THE COUNTY RECORDER  
MCLEOD COUNTY, MINNESOTA.

I hereby certify that this document was filed in this office at 9 o'clock A.M. on the 15th day of Feb, 1989.

By Carmen Istlie, County Recorder

Document No. 226952

## Certificate of Location of Government Corner

This corner was originally set in 1855 by John Ryan of the Government Land Office. He set a post and took reference ties to 2 bearing trees.

In December, 1968, we measured the east line of Section 12 and set a temporary east quarter corner at the center line intersection of the roads.

In October, 1970, we dug for the corner with a backhoe and found a rotted wood stake down  $2\frac{1}{2}$  feet below the road surface. We took available ties and in May, 1972, we set a McLeod County cast iron monument at the corner.

On June 18, 1986, we found the cast iron monument, top broken off, down 2 feet below the road surface. We took new reference ties and set a 1/2 inch by 14 inch iron pipe over the monument, top down 3 inches below the road surface.

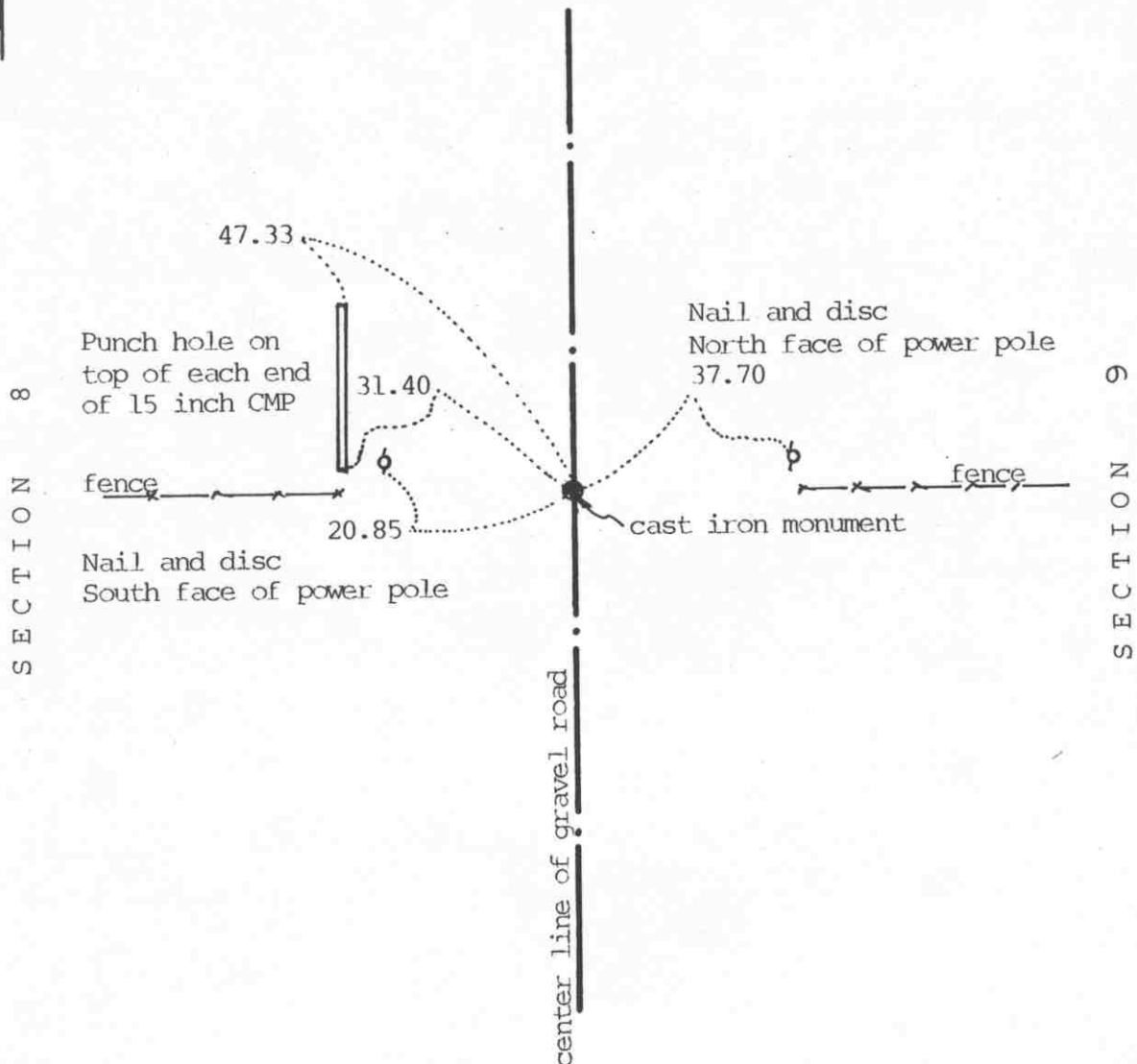
On June 1, 1988, we retied the corner, road to be graded.

On July 28, 1988, we set  $\frac{1}{2}$  inch by 14 inch iron pipe at the corner, and on August 5, 1988, we replaced the iron pipe with a McLeod County cast iron monument, with a 14 inch iron pipe below the monument, and took new reference ties.

We feel the wood stake and the center line of the roads has perpetuated the location of the east quarter corner of Section 12.

EAST QUARTER corner, Section 8, Township 117 North, Range 27 West

## Certificate of Location of Government Corner

SKETCH OF REFERENCE TIES  
(NO SCALE)

Statement of evidence relative to this corner location on sheet 2

I hereby certify that this document was prepared by me or under my direct supervision.

Willard Pellinen

Willard Pellinen  
McLeod County Surveyor  
License No. 9626

Date October 18, 1992

OFFICE OF THE COUNTY RECORDER  
MCLEOD COUNTY, MINNESOTA.

I hereby certify that this document was filed in this office at 9 o'clock A. M. on the 26th day of Oct, 1992.

Carmen (St. Lie) Mulder, County Recorder

By \_\_\_\_\_, Deputy

Document No. 248484

EAST QUARTER corner, Section 8, Township 117 North, Range 27 West**Certificate of Location of Government Corner**

1856. E.N.Darling of the General Land Office established this corner. He set a post and marked 2 30 inch oaks for bearing trees.

January 25, 1972. Mr. Leonard Keiser, 40 years old and had lived in the Southeast Quarter of Section 8 for 15 years, said when road was built 10 years ago, no corner was found. He says the fence running west is on the east-west quarter line of Section 8. Mr Edmund Kappel, 68 years old and had lived in the Southwest Quarter of Section 9 all his life, said the Fence running east is on the east-west quarter line of Section 9. It has always been accepted by the land owners as the line.

October 31, 1972. McCombs Knutson Associates (Dickman Knutson, county surveyor) found a 6 inch by 4 inch stone, down 1 foot, a wood stake by the stone. (probably set when the road was built) Knutson replaced the stone with a McLeod County cast iron monument and took reference ties.

This corner is 4 feet north of a split between the section corners and 9 feet west of a straightline between the corners.

NORTHEAST

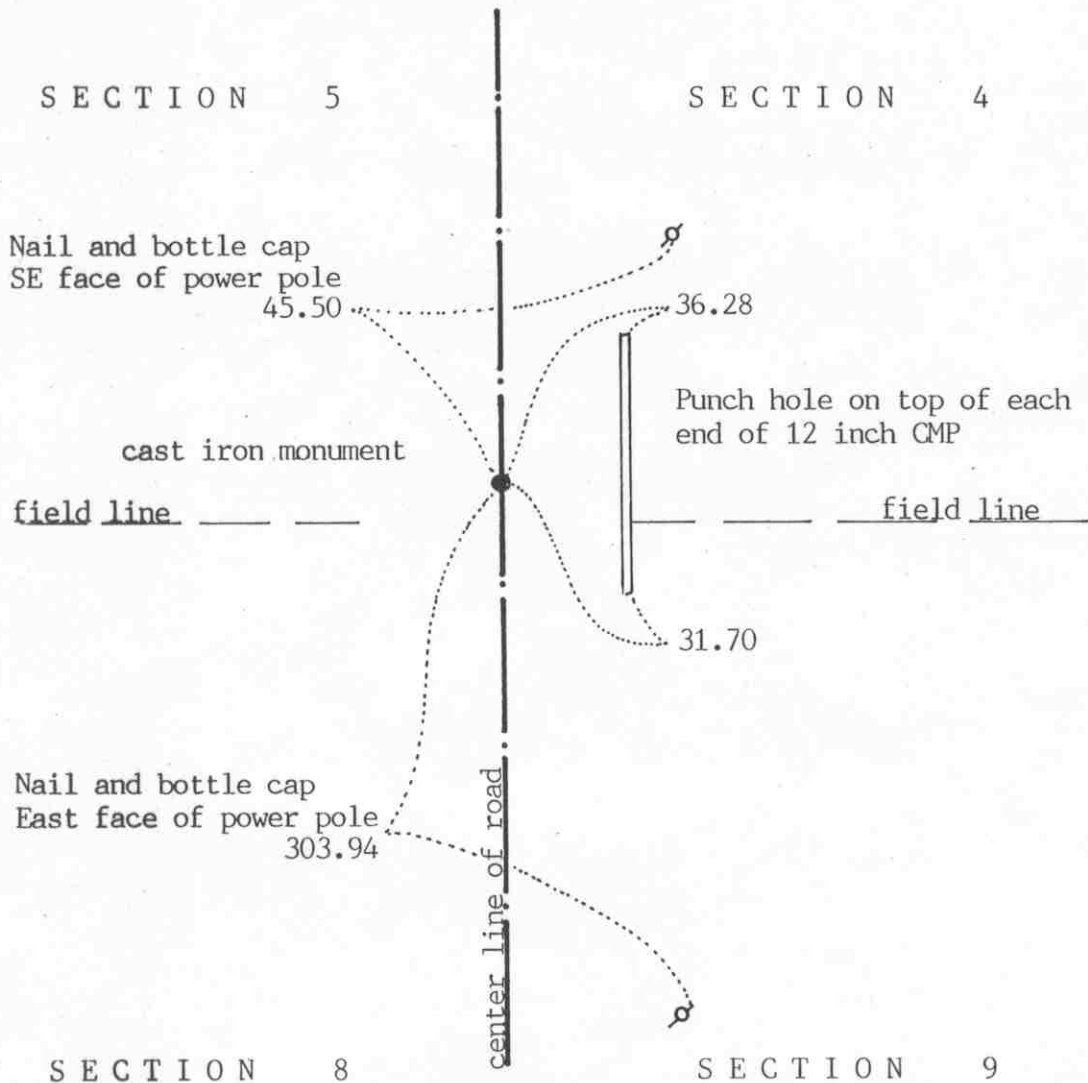
corner, Section 8, Township 117 North, Range 27 West

## Certificate of Location of Government Corner



## SKETCH OF REFERENCE TIES

(NO SCALE)

Statement of evidence relative to this corner location on sheet 2

I hereby certify that this document  
was prepared by me or under my  
direct supervision.

Willard Pellinen

Willard Pellinen  
McLeod County Surveyor  
License No. 9626

Date August 25, 1992

OFFICE OF THE COUNTY RECORDER  
MCLEOD COUNTY, MINNESOTA.

I hereby certify that this document was filed in this  
office at 9 o'clock A.M. on the 1st day  
of Sep, 1992.

Barbara Ostlie, County Recorder

By \_\_\_\_\_, Deputy

Document No. 247424

NORTHEAST corner, Section 8, Township 117 North, Range 27 West

## *Certificate of Location of Government Corner*

1856. E. N. Darling of the General Land Office set a post and marked 3 elms and a maple tree for bearing trees.

1898. E.L.Higgins, county surveyor, had a distance of 2634 feet to the east quarter corner of Section 5 and 2625 feet to the north quarter corner of Section 9.

January 14, 1898. Higgins set the corner by proportionate measure between the quarter corners to the east, west, north and south. He had a distance of 2632.5 feet to the east quarter corner of Section 8 and 2625 feet to the north quarter corner of Section 9.

May 10, 1972. McCombs Knutson Associates (Dickman Knutson, county surveyor) dug for the corner, John Tupa from Hutchinson with a backhoe. They found a stone, 6 inches by 6 inches by 10 inches, sharp point up, and a rotted wood lath by the stone.

October 31, 1972. Knutson set a McLeod County cast iron monument at the corner and took reference ties.

February 18, 1992. We found the monument in good condition and checked the reference ties.

The monument is accepted as marking the correct location of the section corner. It fits occupation line, the center line of the road and it replaces an older monument, the stone, which has perpetuated the location of the corner.

We measured 2636.84 feet to the east quarter corner of Section 5, 2624.18 feet to the north quarter corner of Section 9, 2632.55 feet to the east quarter corner of Section 8 and 2624.53 feet to the north quarter corner of Section 8.

NORTH QUARTER corner, Section 8, Township 117 North, Range 27 West

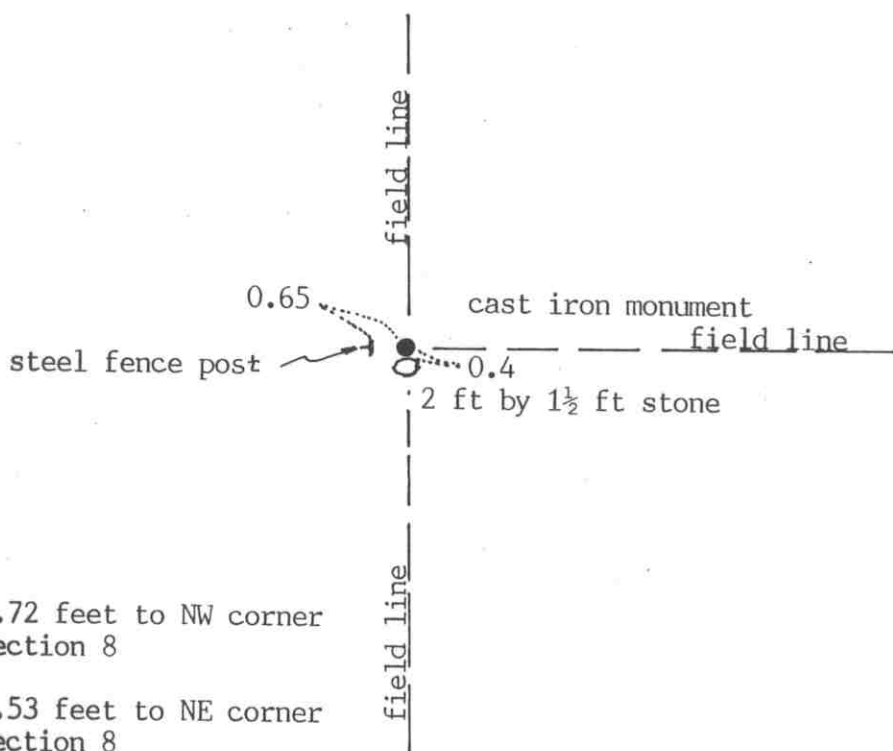
## Certificate of Location of Government Corner



SKETCH OF REFERENCE TIES

(NO SCALE)

SECTION 5



Monument is 4.32 feet south of straight line between section corners.

SECTION 8

Statement of evidence relative to this corner location on sheet 2

I hereby certify that this document  
was prepared by me or under my  
direct supervision.

Willard Pellinen  
Willard Pellinen  
McLeod County Surveyor  
License No. 9626

Date August 27, 1992

OFFICE OF THE COUNTY RECORDER  
MCLEOD COUNTY, MINNESOTA.

I hereby certify that this document was filed in this  
office at 9 o'clock A.M. on the 1st day  
of sep, 19 92.

Carmen Stlie, County Recorder

By \_\_\_\_\_, Deputy

Document No. 247425



## *Certificate of Location of Government Corner*

1856. E. N. Darling of the General Land Office set a post and marked an elm and a linden tree for bearing trees.

January 14, 1972. John Quast, 40 years old, and had lived in the Southeast Quarter of Section 5 all his life, said there used to be a corner fence post at the corner. It's gone now but he said it was along the north side of a large stone which is still there.

November 1, 1972. McCombs Knutson Associates (Dickman Knutson, county surveyor) set a McLeod County cast iron monument at the north edge of the large stone. This was at the intersection of field lines north-south-east. This point is 4.32 feet south of a straight line between the section corners and 17.12 feet west of being half way between the section corners.

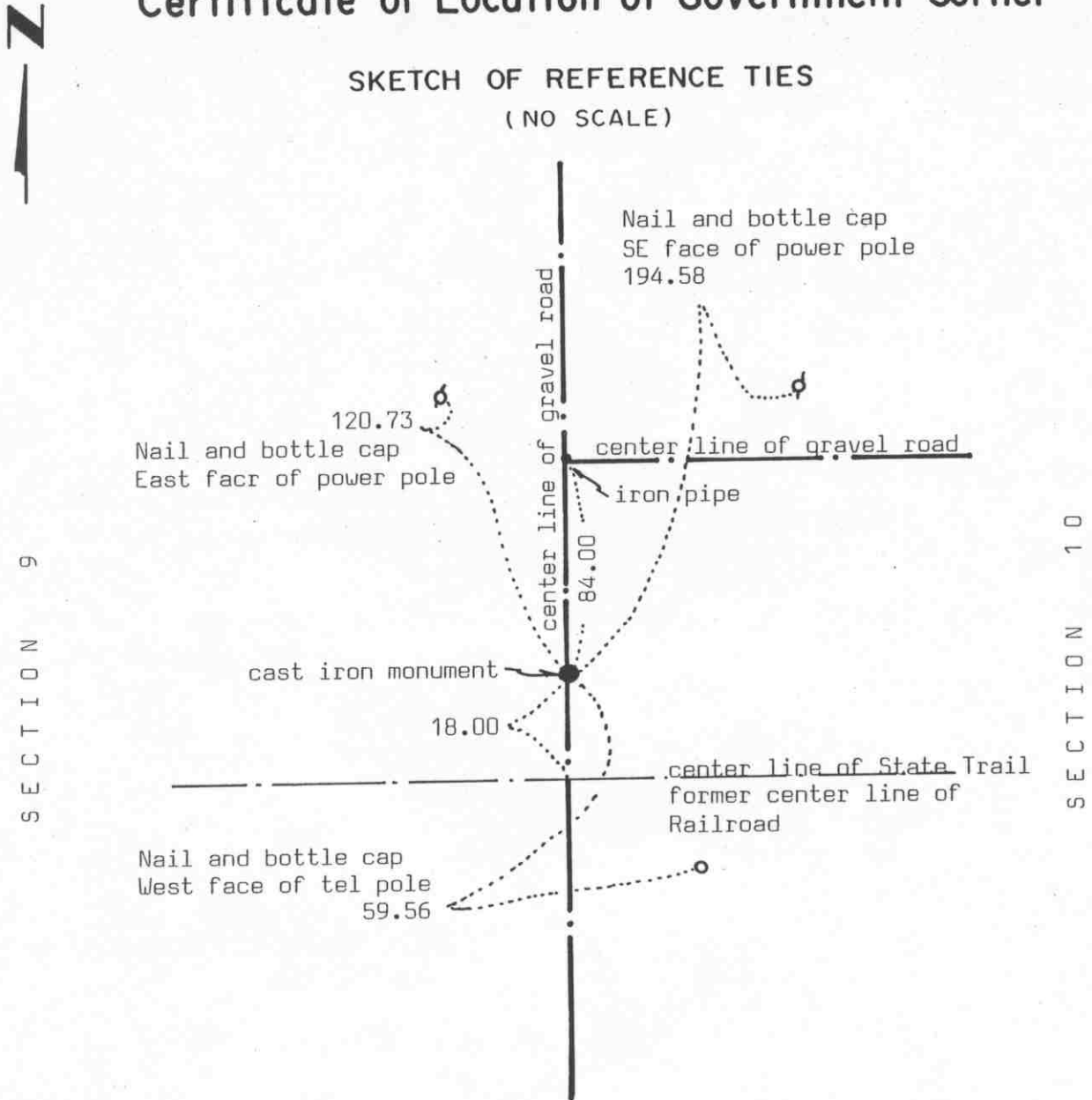
February 20, 1992. We found the monument in good condition and checked the reference ties.

The monument set by Knutson is accepted as marking the correct location of the quarter corner. It fits occupation lines, the field lines and replaces the old corner fence post which had been accepted as the correct corner.

EAST QUARTER corner, Section 9, Township 117 North, Range 27 West

# Certificate of Location of Government Corner

## SKETCH OF REFERENCE TIES (NO SCALE)



Statement of evidence relative to this corner location on sheet 2

I hereby certify that this document was prepared by me or under my direct supervision.

Willard Pellinen

Willard Pellinen  
McLeod County Surveyor  
License No. 9626

Date Oct. 21, 1992

OFFICE OF THE COUNTY RECORDER  
MCLEOD COUNTY, MINNESOTA.

I hereby certify that this document was filed in this office at 9 o'clock A. M. on the 26th day of Oct, 1992.

Carmen Kottler Mulder, County Recorder

By \_\_\_\_\_, Deputy

Document No. 248485

EAST QUARTER corner, Section 9, Township 117 North, Range 27 West

## Certificate of Location of Government Corner

1856. This corner was originally established by E.N.Darling of the General Land Office. He set a post and marked a 20 inch ash and a 20 inch elm for bearing trees.

1898. E.L.Higgins, county surveyor, found a stone and a bearing tree.

Book 42, Page 515 in the County Records Office describes the railroad center line to be 18 feet south of the quarter corner.

June 21, 1971. McCombs Knutson Associates (Dickman Knutson, county surveyor) dug for the corner. (John Tupa from Hutchinson with a backhoe. They dug a hole 10 feet by 10 feet by  $7\frac{1}{2}$  feet deep. Down at  $6\frac{1}{2}$  feet they found old rotted logs across the road and down at  $7\frac{1}{2}$  feet they hit water.

October 6, 1971. Knutson set a McLeod County cast iron monument 18.00 feet north of the center line of the railroad tracks, on the center line of the north-south road and took reference ties.

This corner is within 0.05 foot of being on a split between the section corners and 5.28 feet east of a straight line between the corners. This corner is 5250 feet east of the west quarter corner of Section 9 compared with a distance of 2651 feet by Higgins in 1898.

April 16, 1992. We found the monument in good condition down 3 inches below the road surface and took new reference ties.

NORTHEAST corner, Section 9, Township 117 North, Range 27 West

# Certificate of Location of Government Corner

## SKETCH OF REFERENCE TIES (NO SCALE)



SECTION 4

SECTION 3

Nail and bottle cap  
West face of 20 inch tree  
Up 2 feet

4.10

cast iron monument

0.7

Steel fence post

fence

68.56

Nail and bottle cap  
South face of 16 inch elm,  
Up 2 feet

SECTION 9

SECTION 10

Statement of evidence relative to this corner location on sheet 2

I hereby certify that this document  
was prepared by me or under my  
direct supervision.

Willard Pellinen

Willard Pellinen  
McLeod County Surveyor  
License No. 9626

Date Nov. 15, 1992

OFFICE OF THE COUNTY RECORDER  
MCLEOD COUNTY, MINNESOTA.

I hereby certify that this document was filed in this  
office at 9 o'clock A.M. on the 20th day  
of November, 19 92.

Carman B. Fisher, County Recorder

By \_\_\_\_\_, Deputy

Document No. 248089

NORTHEAST

corner, Section 9, Township 117 North, Range 27 West

## *Certificate of Location of Government Corner*

1856. This corner was originally established by E.N.Darling of the General Land Office. He set a post in a dry marsh and marked 2 aspens for bearing trees.

February 4, 1901. E.L.Higgins found a stone at the corner. He measured 2657 feet to the east quarter corner of Section 4.

January 1898. E.L.Higgins found a post and a bearing tree. He shows a distance of 2634 feet to the north quarter corner of Section 9.

October 1971. McCombs Knutson Associates (Dickman Knutson, county surveyor) searched and dug around the fence intersection, fences north and east. They found a stone, flat 2 inches by 4 inches by 16 inches long, standing on end, near the fence intersection. This stone was 2657.44 feet south of the east quarter corner of section 4, compared with Higgins' distance of 2657 feet. Knutson measured 2613.64 feet to the north quarter corner of Section 9 compared with 2634 by Higgins.

October 26, 1971. Knutson replaced the stone with a McLeod County cast iron monument and took reference ties.

The monument set by Knutson is accepted as the location of the section corner. It fits occupation lines, the fences, and it perpetuates the location of the found stone.

November 13, 1992. We found no reference ties remaining. We found the monument in good condition down 6 inches below the surface and took new available ties.

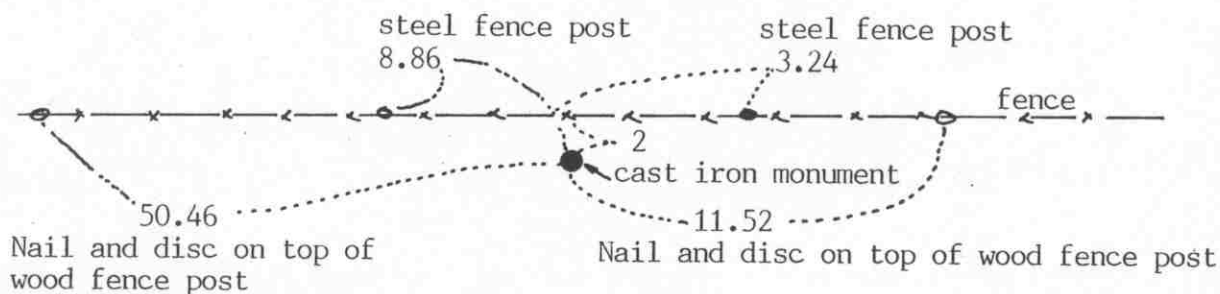
NORTH QUARTER corner, Section 9, Township 117 North, Range 27 West

# Certificate of Location of Government Corner

## SKETCH OF REFERENCE TIES

(NO SCALE)

SECTION 4



2624.18 feet to the northwest corner of Sec. 9

2613.64 feet to the northeast corner of Sec. 9

Monument is 48.58 feet south of a straight line between the section corners.

SECTION 9

Statement of evidence relative to this corner location on sheet 2

I hereby certify that this document  
was prepared by me or under my  
direct supervision.

Willard Pellinen

Willard Pellinen  
McLeod County Surveyor  
License No. 9626

Date NOV. 15, 1992

OFFICE OF THE COUNTY RECORDER  
MCLEOD COUNTY, MINNESOTA.

I hereby certify that this document was filed in this  
office at 9 o'clock A.M. on the 20th day  
of November, 1992.

Carmen Helie Mulder, County Recorder

By \_\_\_\_\_, Deputy

Document No. 248590

NORTH QUARTER corner, Section 9, Township 117 North, Range 27 West**Certificate of Location of Government Corner**

1856. E.N.Darling of the General Land Office established this corner. He set a post in a dry marsh and marked 2 aspens for bearing trees.

January 14, 1898. E.L.Higgins, county surveyor, shows a stone at this corner.

January 3, 1972. McCombs Knutson Associates (Dickman Knutson, county surveyor) measured the north line of section 9 and set a temporary quarter corner.

July 24, 1979. We searched the area for the corner and found a 1 inch by 2 inch wood stake,  $2\frac{1}{2}$  feet long at the edge of a 3 foot by 1 foot stone. This was within 1 foot of Higgins' 1898 distance to the northwest corner of Section 9. We measured 2624.18 feet compared with Higgins' distance of 2625 feet. We set a McLeod County cast iron monument and took available reference ties.

November 13, 1992 . We checked the reference ties to the monument.

EAST QUARTER corner, Section 10, Township 117 North, Range 27 West

## Certificate of Location of Government Corner

SKETCH OF REFERENCE TIES  
(NO SCALE)

SECTION 10

SECTION 11

Chiseled + on top of  
south end of conc culv  
70.63

cast iron monument

Nail and bottle cap  
SE face of tel. pole  
45.42

106.10

BUILDING

125.65

52.12

Nail and bottle cap  
N'ly face of power pole

center line of bit. road

## Statement of evidence relative to this corner location on sheet 2

I hereby certify that this document  
was prepared by me or under my  
direct supervision.

Willard Pellinen

Willard Pellinen  
McLeod County Surveyor  
License No. 9626

Date October 21, 1992OFFICE OF THE COUNTY RECORDER  
MCLEOD COUNTY, MINNESOTA.

I hereby certify that this document was filed in this  
office at 9 o'clock A.M. on the 26th day  
of Oct, 1992.

Carmen St. Pierre Mulder, County Recorder

By \_\_\_\_\_, Deputy

Document No. 248486



EAST QUARTER corner, Section 10, Township 117 North, Range 27 West**Certificate of Location of Government Corner**

1856. E. N. Darling of the General Land Office established this corner. He set a post and marked a 14 inch elm and a 10 inch linden for bearing trees.

State Highway No. 261 right of way map shows this corner to be 18.50 feet south of the center line of the railroad. The railroad map also shows the corner to be south of the tracks.

November 13, 1973. McCombs Knutson Associates (Dickman Knutson, county surveyor) found a railroad spike on the center line of the north-south road 18.50 feet south of the center line of the tracks.

July 16, 1979. We found a stone below the railroad spike. We moved the stone to make room for a cast iron monument. We set the monument and took available ties.

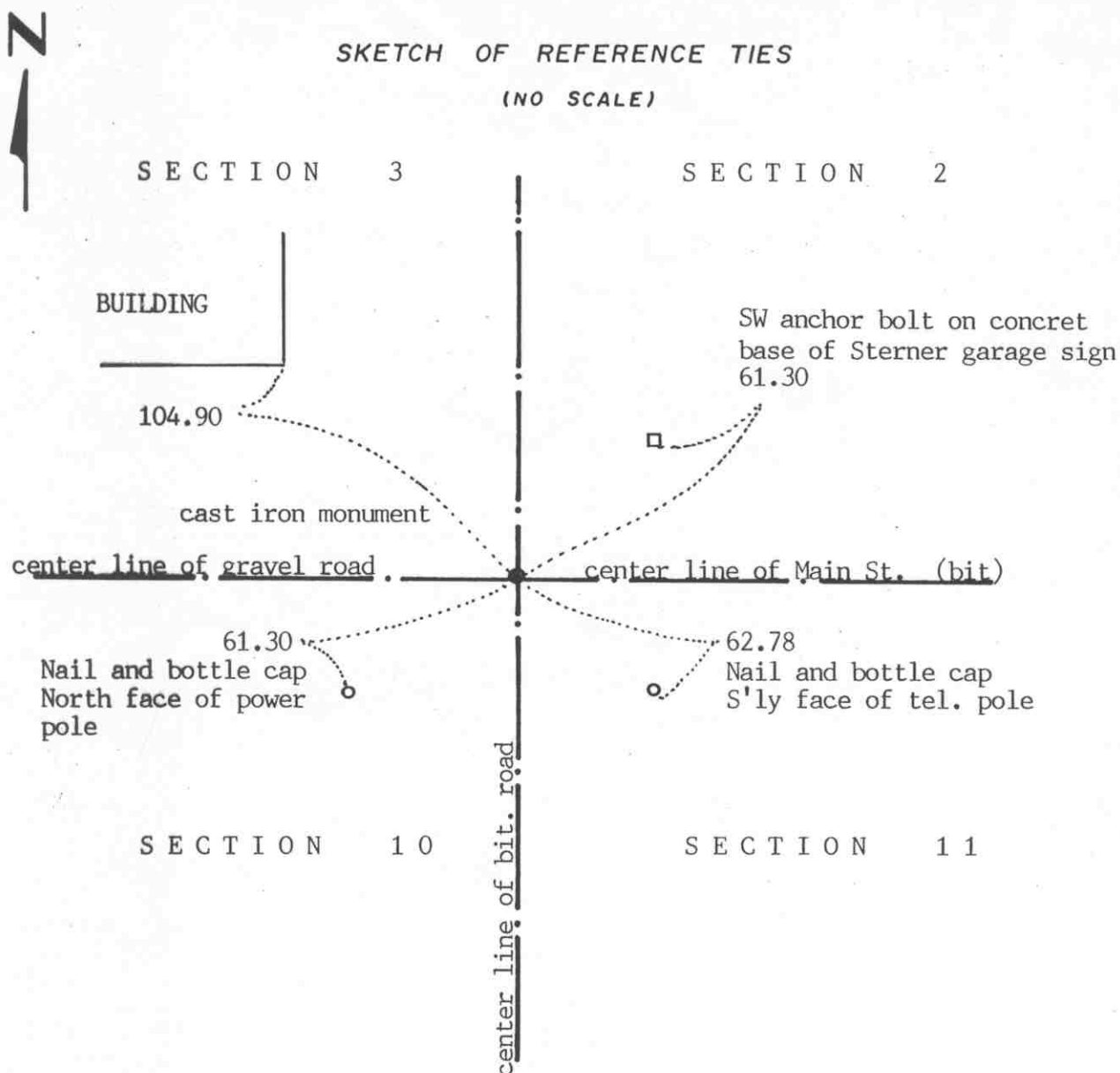
April 16, 1992. We found the monument in good condition down 3 inches below the bituminous surface and took new reference ties.

NORTHEAST corner, Section 10, Township 117 North, Range 27 West

# Certificate of Location of Government Corner

SKETCH OF REFERENCE TIES

(NO SCALE)



Statement of evidence relative to this corner location on sheet 2

I hereby certify that this document was prepared by me or under my direct supervision.

Willard Pellinen

Willard Pellinen  
McLeod County Surveyor  
License No. 9626

Date August 30, 1992

OFFICE OF THE COUNTY RECORDER  
MCLEOD COUNTY, MINNESOTA.

I hereby certify that this document was filed in this office at 9 o'clock A.M. on the 7th day of October, 1992.

Carmen Ostlie, County Recorder

By \_\_\_\_\_, Deputy

Document No. 248098

NORTHEAST

corner, Section 10, Township 117 North, Range 27 West

## Certificate of Location of Government Corner

1856. E. N. Darling of the General Land Office set a post in a wet marsh and marked 3 elms and an ash for bearing trees.

February 4, 1901. Field notes by E. L. Higgins, county surveyor, show a drag tooth at the corner and a distance of 2646 feet to the east quarter corner of Section 3.

October 6, 1971. McCombs Knutson Associates (Dickman Knutson, county surveyor) set a cast iron monument at the corner using monumentation in the city of Winsted.

February 18, 1992. We found the monument in good condition down 6 inches below the surface of the road. We took new reference ties.

The monument set by Knutson is accepted as marking the correct position of the section corner. The monumentation in the city of Winsted has perpetuated the correct location of the corner.

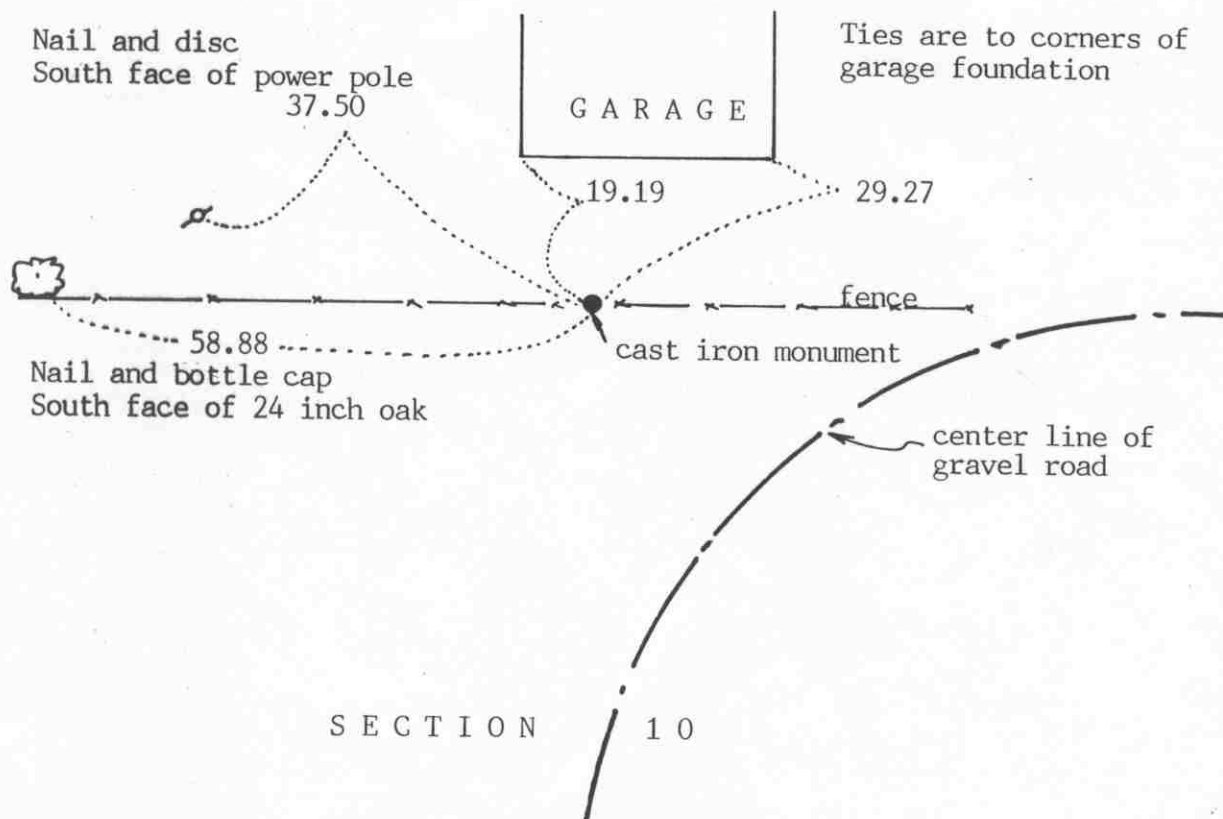
NORTH QUARTER corner, Section 10, Township 117 North, Range 27 West

## Certificate of Location of Government Corner



SKETCH OF REFERENCE TIES  
(NO SCALE)

SECTION 3

Statement of evidence relative to this corner location on sheet 2

I hereby certify that this document  
was prepared by me or under my  
direct supervision.

Willard Pellinen

Willard Pellinen  
McLeod County Surveyor  
License No. 9626

Date August 27, 1992

OFFICE OF THE COUNTY RECORDER  
MCLEOD COUNTY, MINNESOTA.

I hereby certify that this document was filed in this  
office at 9 o'clock A.M. on the 1st day  
of Sep, 1992.

Sarmon Ostlie, County Recorder

By \_\_\_\_\_, Deputy

Document No. 247426

NORTH QUARTER corner, Section 10, Township 117 North, Range 27 West***Certificate of Location of Government Corner***

1856. E. N. Darling of the General Land Office set a post and marked an elm and a hickory tree for bearing trees.

August 24, 1971. McCombs Knutson Associates (Dickman Knutson, county surveyor) set a temporary quarter corner on the northerly extension of the center line of the road and along the east-west fence line, which have been accepted as the north-south quarter line of Section 10 and the north line of Section 10 by adjoining land owners.

October 31, 1972. Knutson set a McLeod County cast iron monument at the corner and took available reference ties.

This monument is  $6\frac{1}{2}$  feet north of a straight line between the section corners and approximately 9 feet west of a split between the section corners.

February 20, 1992. We found the monument in good condition and checked the reference ties.

There being no evidence to the contrary, we accept the monument set by Knutson as marking the correct location of the quarter corner.

NORTHEAST corner, Section 11, Township 117 North, Range 27 West

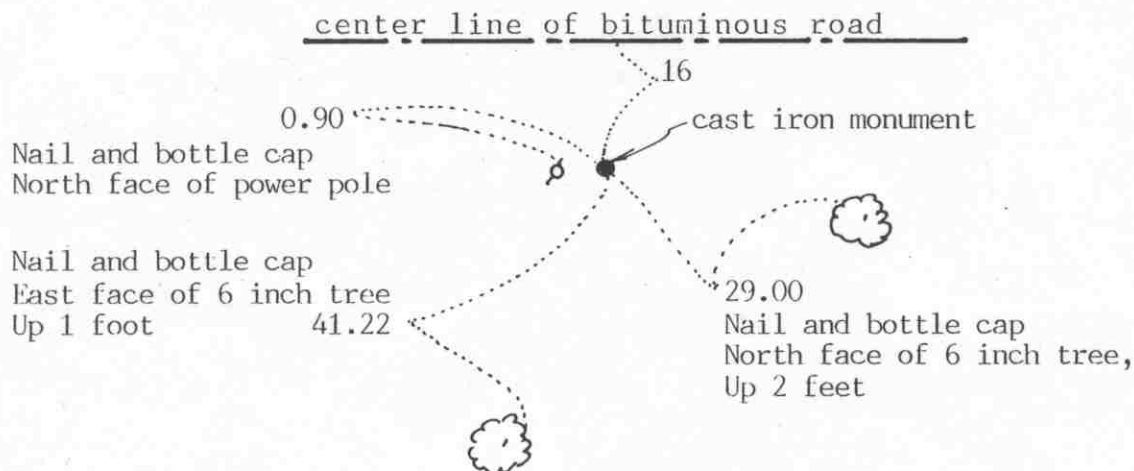
# Certificate of Location of Government Corner



SKETCH OF REFERENCE TIES  
(NO SCALE)

SECTION 2

SECTION 1



SECTION 11

SECTION 12

Statement of evidence relative to this corner location on sheet 2

I hereby certify that this document was prepared by me or under my direct supervision.

Willard Pellinen

Willard Pellinen  
McLeod County Surveyor  
License No. 9626

Date September 10, 1992

OFFICE OF THE COUNTY RECORDER  
MCLEOD COUNTY, MINNESOTA.

I hereby certify that this document was filed in this office at 9 o'clock A.M. on the 7th day of October, 1992.

Carmen Ostlie, County Recorder

By \_\_\_\_\_, Deputy

Document No. 248099

NORTHEAST

corner, Section 11, Township 117 North, Range 27 West

## *Certificate of Location of Government Corner*

1856. The Public Land Survey was run by E. N. Darling who set a post and marked 4 elms for bearing trees.

January 25, 1968. McCombs Knutson Associates (Dickman Knutson, county surveyor) found an iron pipe at the corner. This was the northeast corner of the plat of Pontas Point.

September 25, 1970. Knutson replaced the iron pipe with a McLeod County cast iron monument and took reference ties.

February 18, 1992. We found the monument in good condition and took new reference ties.

The cast iron monument set by Knutson is accepted as marking the section corner. It replaces an older monument set by Delbert Rieke, surveyor, who platted Pontas Point in 1967.

EAST QUARTER corner, Section 12, Township 117 North, Range 27 West

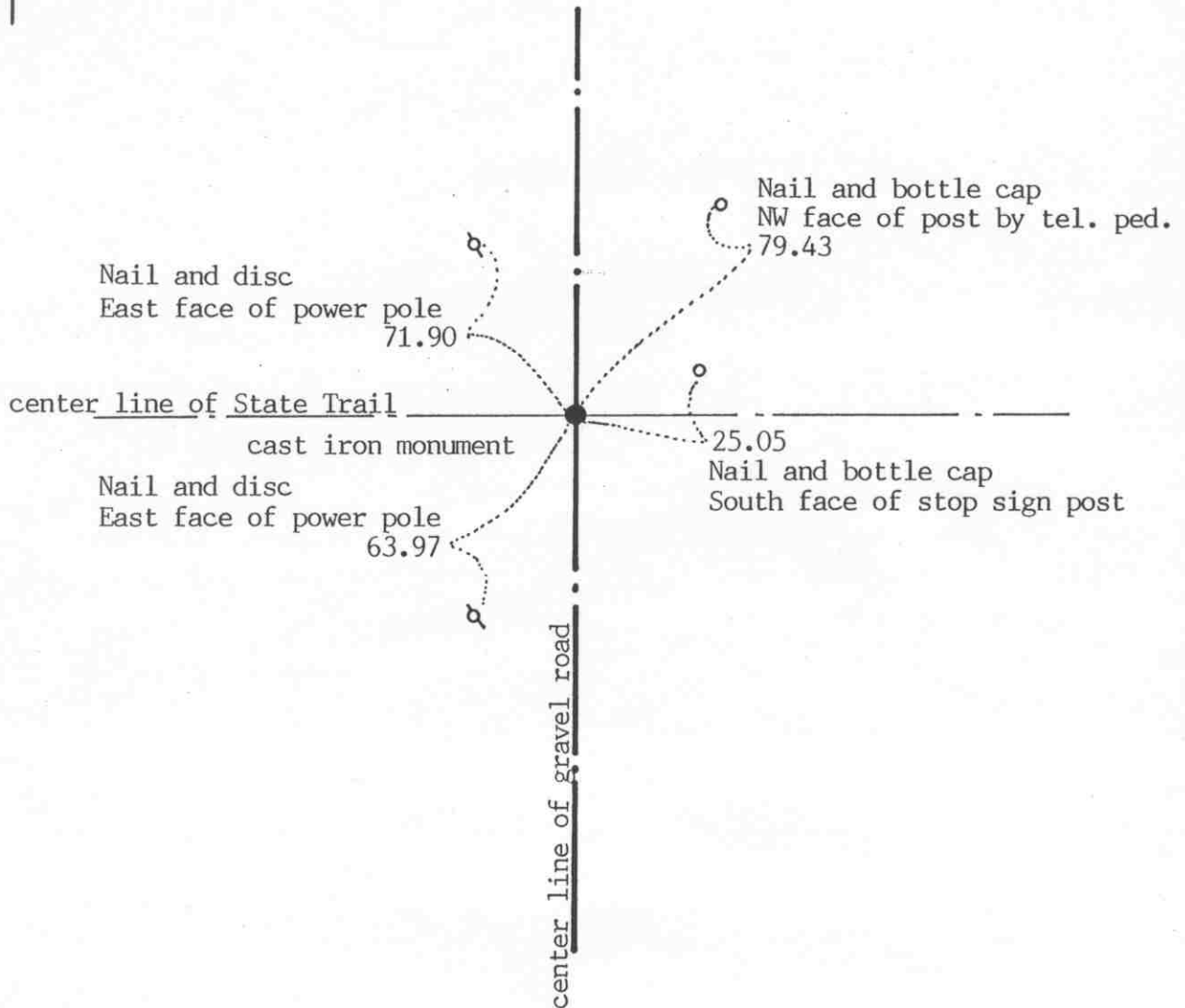
## Certificate of Location of Government Corner

## SKETCH OF REFERENCE TIES

(NO SCALE)

SECTION 12, T. 117, R. 27

SECTION 7, T. 117, R. 26



Statement of evidence relative to this corner location on sheet 2

I hereby certify that this document  
was prepared by me or under my  
direct supervision.

Willard Pellinen

Willard Pellinen  
McLeod County Surveyor  
License No. 9626

Date July 22, 1993

OFFICE OF THE COUNTY RECORDER  
MCLEOD COUNTY, MINNESOTA.

I hereby certify that this document was filed in this  
office at 4 o'clock P. M. on the 27th day  
of July, 1993.

Carmen Ostlie Mulder, County Recorder

By \_\_\_\_\_, Deputy

Document No. 253805



EAST QUARTER corner, Section 12, Township 117 North, Range 27 West

## Certificate of Location of Government Corner

1855. John Ryan of the General Land Office established this corner. He set a post and marked 2 trees for bearing trees.

The railroad right of way map shows the corner to be on the center line of the railroad.

June 6, 1968. McCombs Knutson Associates (Dickman Knutson, county surveyor) set a McLeod County cast iron monument at the intersection of the north-south gravel road and the center line of the tracks and took available reference ties.

Mr. John Sherman, who lived in the Northwest Quarter of Section 7, T117, R26, and Mr. Ronald Karels, in the East Half of the Southeast Quarter of Section 12, both agree this is the correct location of the quarter corner.

March 31, 1993. We found the monument in good condition down 12 inches below the surface of the gravel road and took new reference ties.

NORTHEAST

Sheet 1 of 2 sheetscorner, Section 12, Township 117 North, Range 27 West

## Certificate of Location of Government Corner



## SKETCH OF REFERENCE TIES

(NO SCALE)

SECTION 1  
T 117 R 27SECTION 6  
T 117 R 26

$\frac{1}{2}$  inch iron pipe  
in shldr of road  
25.34

Nail and bottle cap  
S'ly face of 12 inch triple tree  
Up 3 feet.  
37.83

cast iron monument  
fence

28.15  
 $\frac{1}{2}$  inch iron pipe  
in shldr of road

69.86  
Nail and bottle cap  
North face of 8 inch tree,

SECTION 12  
T 117 R 27SECTION 7  
T 117 R 26

center line of gravel road

Statement of evidence relative to this corner location on sheet 2

I hereby certify that this document  
was prepared by me or under my  
direct supervision.

Willard Pellinen

Willard Pellinen  
McLeod County Surveyor  
License No. 9626

Date Sept. 10, 1998 1992

OFFICE OF THE COUNTY RECORDER  
MCLEOD COUNTY, MINNESOTA.

I hereby certify that this document was filed in this  
office at 9 o'clock A.M. on the 7th day  
of October, 1992.

Carmen Ostlie, County Recorder

By \_\_\_\_\_, Deputy

Document No. 248100

Northeast                      corner, Section 12, Township 117 North, Range 28 <sup>27?</sup> West

## *Certificate of Location of Government Corner*

This corner was originally established by the government in 1856, and was monumented by a wood post.

McLeod County records show that in 1900, E.L.Higgins recorded a steel post at this corner.

On June 22, 1971, Dickman Knutson found a 1 inch square steel rod 3 feet long, down  $1\frac{1}{2}$  feet below the road surface on the center line of the north-south road in line with fences running east and west. Mr. John Sherman (65 years old) owner of the Northwest Quarter of Section 7, Township 117, Range 26, for 20 years agrees this is the correct location of the government corner.

Knutson set a McLeod County cast iron monument at the location of the found steel rod and took reference ties.

We accept this corner as perpetuated by the steel rod as the true northeast corner of Section 12.

February 18, 1992. We found the monument in good condition down 12 inches below the surface of the road. All old reference ties had been destroyed so we took new ties.

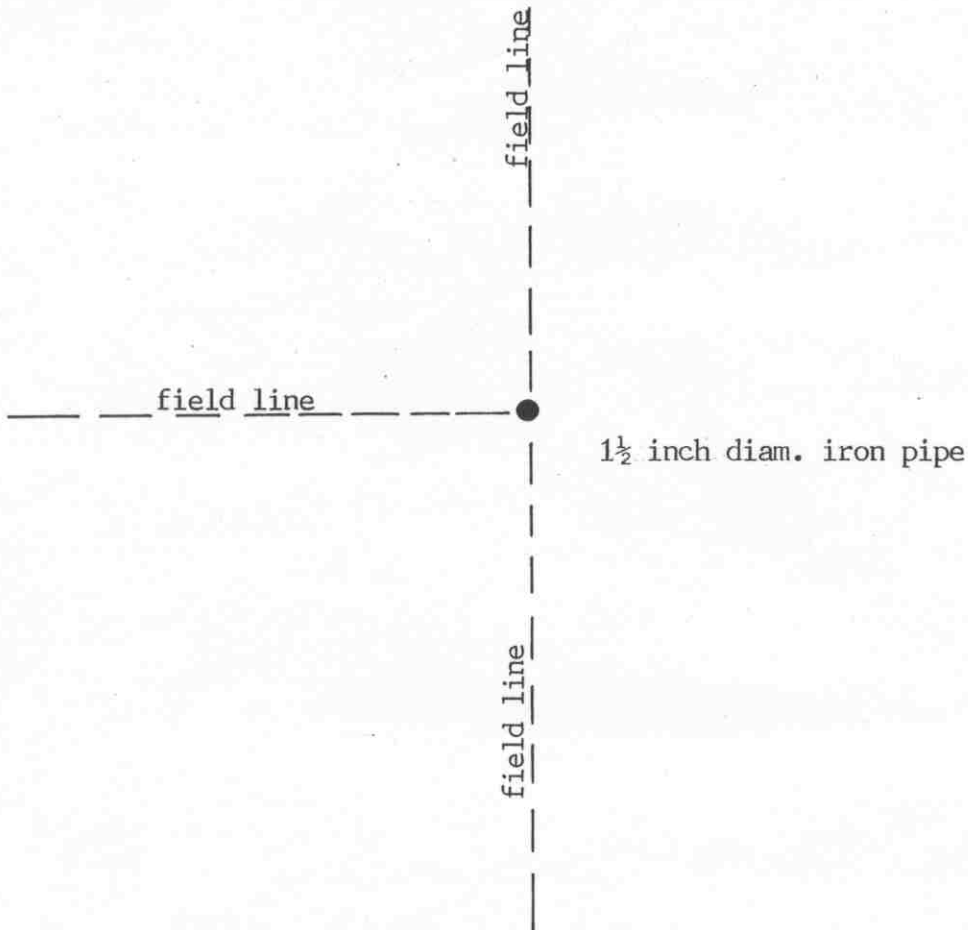
NORTH QUARTER corner, Section 12, Township 117 North, Range 27 West

# Certificate of Location of Government Corner

## SKETCH OF REFERENCE TIES

(NO SCALE)

SECTION 1



SECTION 12

Statement of evidence relative to this corner location on sheet 2

I hereby certify that this document was prepared by me or under my direct supervision.

Willard Pellinen

Willard Pellinen  
McLeod County Surveyor  
License No. 9626

Date July 26, 1993

## OFFICE OF THE COUNTY RECORDER MCLEOD COUNTY, MINNESOTA.

I hereby certify that this document was filed in this office at 4 o'clock P. M. on the 5th day of August, 1993.

Carmin Estlie Mulder, County Recorder

By \_\_\_\_\_, Deputy

Document No. 253993

NORTH QUARTER corner, Section 12, Township 117 North, Range 27 West**Certificate of Location of Government Corner**

1856. This corner was originally established by the General Land Office. E. N. Darling set a post and marked an 8 inch ironwood and a 6 inch hickory for bearing trees.

March 3, 1900. E. L. Higgins, county surveyor, found a stake at the corner.

January, 1968. McCombs Knutson Associates (Dickman Knutson, county surveyor) found a  $1\frac{1}{2}$  inch diameter iron pipe under a large rock, at the intersection of fences north, south, east and west. This was within 4-5 feet of being on a split between the section corners.

June 15, 1993. We found the iron pipe in place, fences have been removed. Field lines now north, south and west. No available reference ties.